

Montana Department of Natural Resources and Conservation (DNRC)

2017 Urban Forestry Grant Application – City of Red Lodge

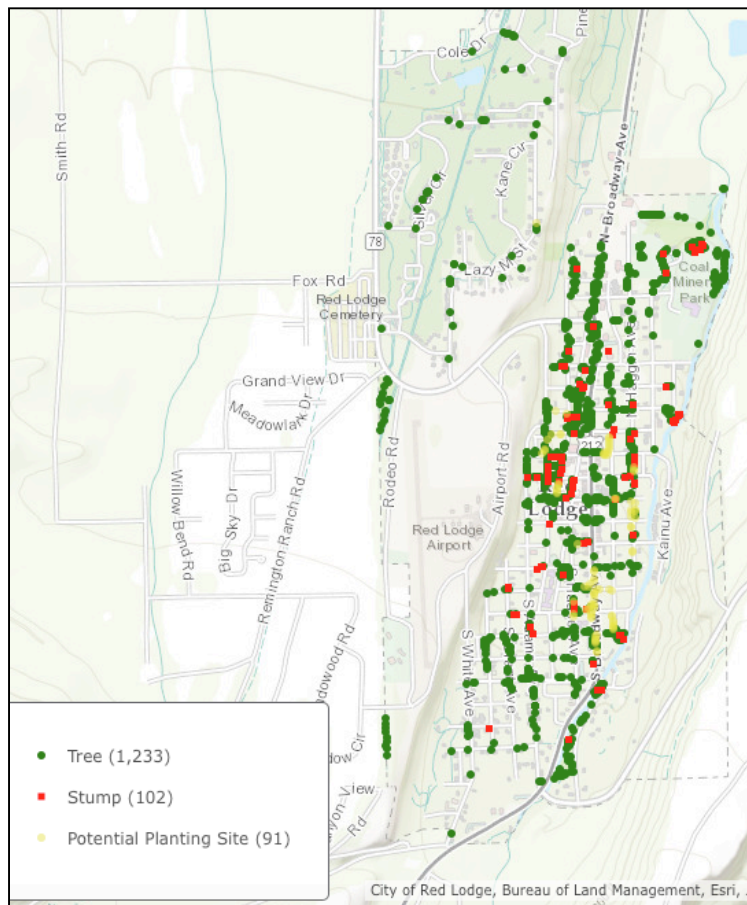
Submitted by Theresa Whistler

Red Lodge completed its second public tree inventory in 2017 between June 15 to October 18. The City contracted retired Rocky Mountain College botany professor, Jennifer Lyman, Ph.D, to lead the inventory effort and update forestry recommendations. Two other local residents helped with field data collection.

The objective of the inventory was to collect and analyze information on “public” trees within the corporate limits of Red Lodge (i.e., trees on City and county-owned property including parks and street right-of-ways).

A total of 1426 locations were surveyed including trees, stumps and planting sites consistent with DNRC recommendations for the 2017 inventory. The new TreeKeeper data schema enables Red Lodge to identify and monitor progress of public trees within the City: Arbor Day, cost-share, other grant trees, street or park trees, maintenance recommendations, maintenance tasks, etc.

After the inventory was completed, Red Lodge’s Urban Forestry Management Plan (UFMP) was revised using the City and County Geographic Information System (GIS) to perform spatial data analysis and mapping. Further post processing was conducted to summarize DBH, canopy, height and deadwood statistics for comparison with the 2008 inventory.



The UFMP serves as a strategic approach to sustaining the City’s community trees on a short and long-term basis.

A ten-year work plan within the UFMP was updated and serves as a guideline to maintain and enhance the City’s urban forest. The work plan suggests 1) improved communication of ordinance No. 919 to strengthen tree care, planning and management, 2) increased tree management responsibility of the Parks Board and Public Works Department, 3) a Citywide tree education campaign and continued cost-share and Arbor Day tree program, 4) an increased allocation of funds toward tree care, 5) greater outreach and coordination of volunteers to assist with community forestry maintenance.

The listing or preferred vs. prohibited trees for planting in Red Lodge was also updated within the UFMP.

Following City Council discussion and action, Red Lodge’s UFMP was adopted in its final version, dated March 2018.