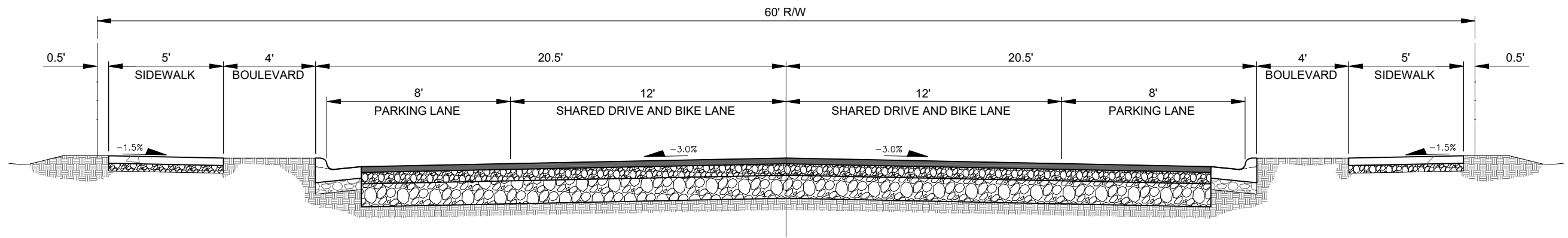


TYPICAL 70-FOOT RIGHT-OF-WAY STREET SECTION

NOTE:

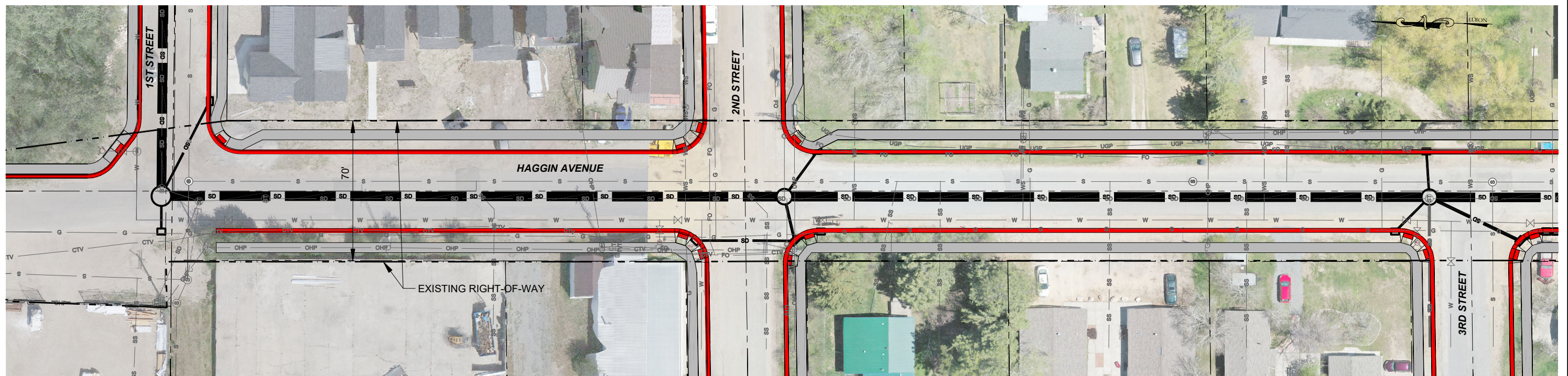
BOULEVARD MAY VARY FROM 0 TO 9.5 FEET TO ACCOMMODATE SPECIAL R/W CONSIDERATIONS



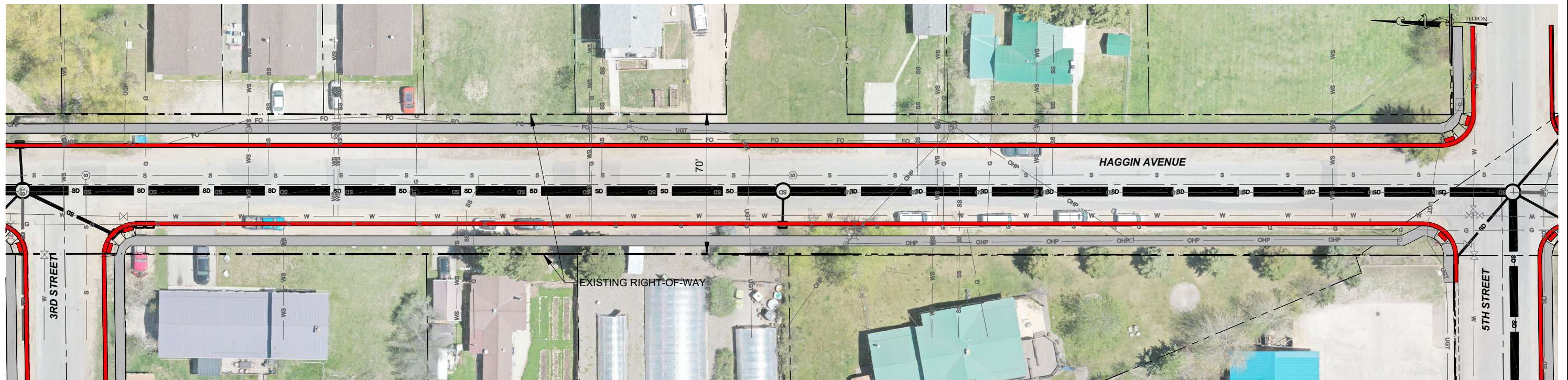
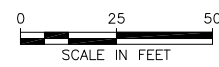
TYPICAL 60-FOOT RIGHT-OF-WAY STREET SECTION

PROPOSED TYPICAL STREET SECTIONS

CITY OF RED LODGE, MONTANA
PHASE 1 STORMWATER IMPROVEMENTS



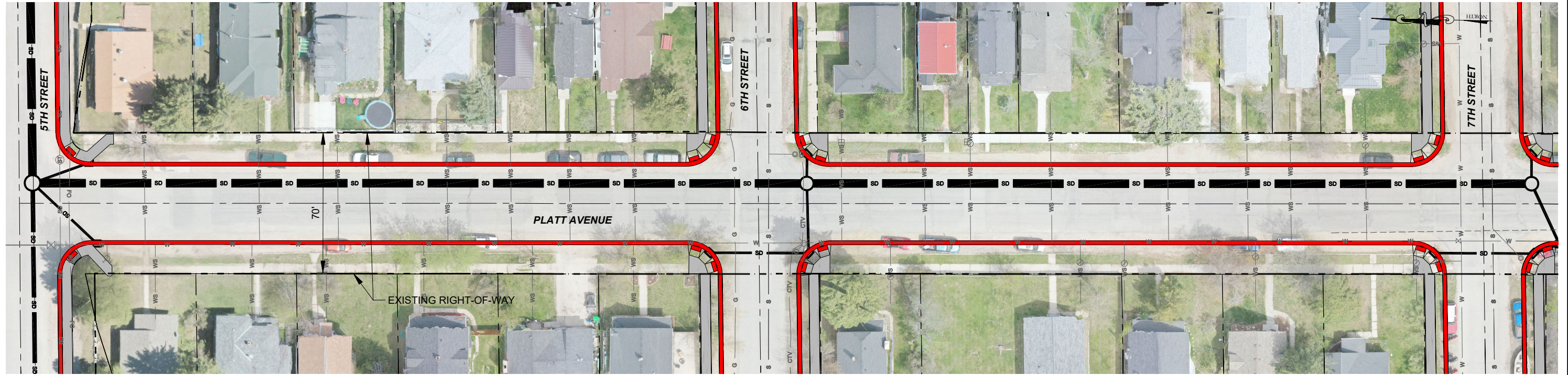
HAGGIN AVENUE - 1ST STREET TO 3RD STREET



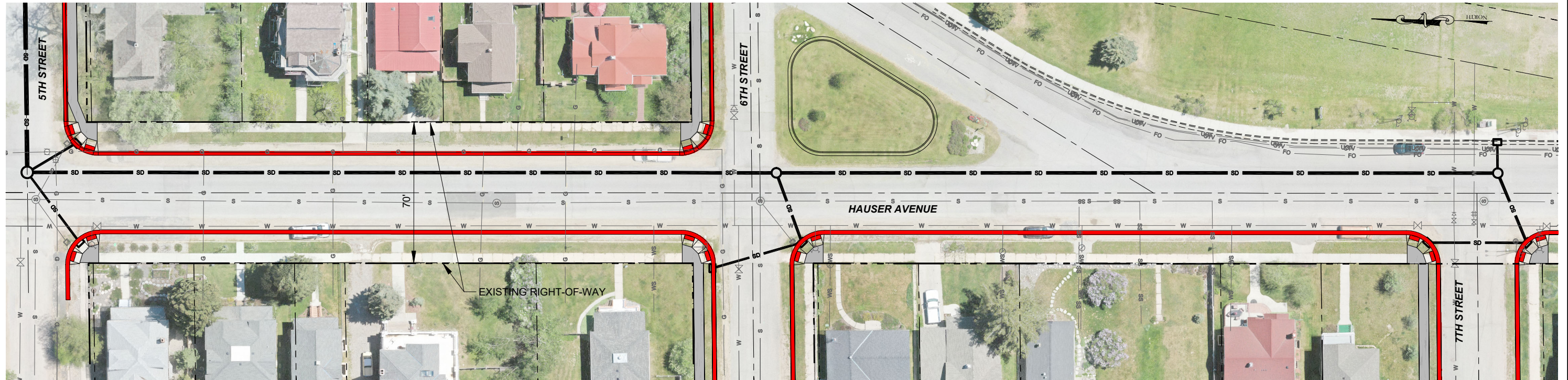
HAGGIN AVENUE - 3RD STREET TO 5TH STREET



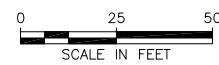
Y:\shared\Billings Projects\2-17103 - Stormwater PER Update\CADD 2-17103-TO15-Design\Exhibits\2-17103-TO15-Phase 1 Open House Exhibits.dwg



PLATT AVENUE - 5TH STREET TO 7TH STREET



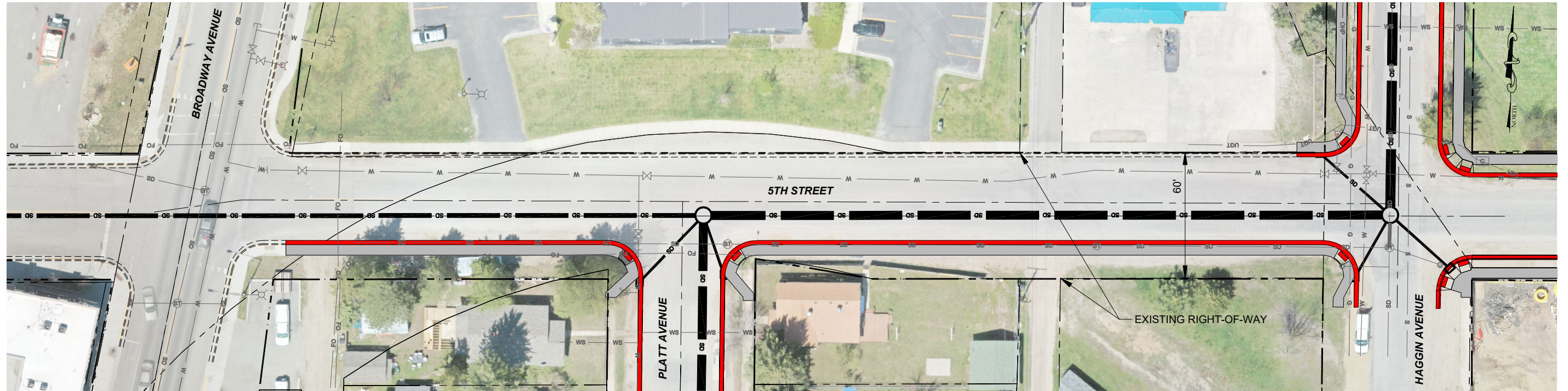
HAUSER AVENUE - 5TH STREET TO 7TH STREET



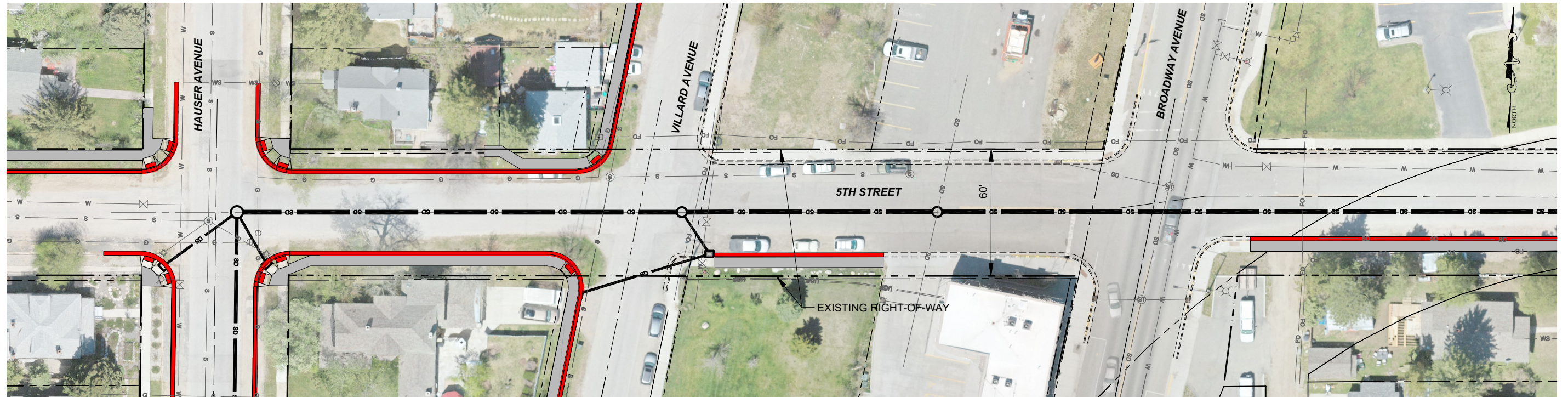
PROPOSED STREET LAYOUT

CITY OF RED LODGE, MONTANA
PHASE 1 STORMWATER IMPROVEMENTS

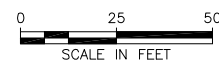
Y:\shared\Billings Projects\2-17103 - Stormwater PER Update\CADD 2-17103-TO15-Design\Exhibits\2-17103-TO15-Phase 1 Open House Exhibits.dwg



5TH STREET - BROADWAY AVENUE TO HAGGIN AVE.



5TH STREET - HAUSER AVE. TO BROADWAY



PROPOSED STREET LAYOUT

CITY OF RED LODGE, MONTANA
PHASE 1 STORMWATER IMPROVEMENTS