



# Wilson Bros. Construction

Five Generations of Construction Excellence

Phone: (307)548-6559

Fax: (307)548-6594

Email: [office@wilson-bros.com](mailto:office@wilson-bros.com)

PO Box 636, Cowley WY 82420

August 24, 2023

Great West Engineering  
115 N. Broadway, Suite 500  
Billings, MT 59105  
Attn: Brandon Duffey, PE

Re: TRAFFIC CONTROL PLAN - BROADWAY AVENUE & 5<sup>TH</sup> STREET CROSSING

Dear Brandon,

Please see the attached traffic control plan drawing. All signs will be installed and maintained per the most current MUTCD. In addition to the detailed drawing the following narrative has been provided:

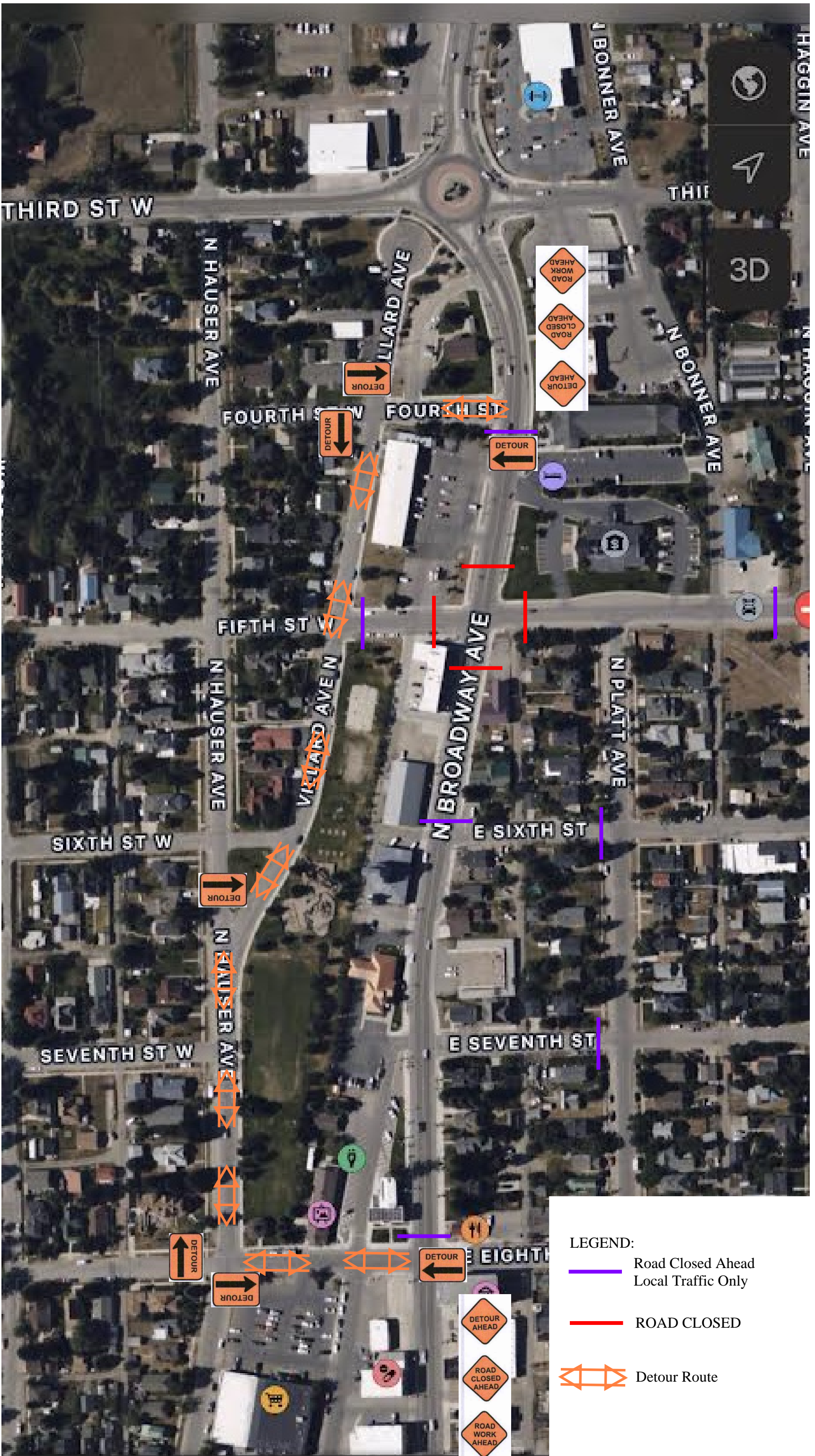
Traffic will be detoured from Broadway Ave on 4<sup>th</sup> St and 8<sup>th</sup> St as shown on the attached drawing. Local traffic only signs will be used to allow local traffic to access the banks and other businesses along and adjacent to Broadway Ave. The hard closer will be on all four side of the intersection of Broadway Ave and 5<sup>th</sup> St. The detour route will carry north and south bound traffic from Broadway Ave to 4<sup>th</sup> St on the northside and 8<sup>th</sup> St on the south. The traffic will then be detoured using appropriate signage to Villard/Houser.




We anticipate that this closer will be in place for one week, 24 hours a day, to allow for the exploratory excavation to determine exact depth and size of the existing MDT storm sewer, lowering of the 12" DIP waterline, and the installation of the new storm sewer along with the required flowable backfill as required by MDT.

Kayce Hoffman will be the Traffic Control Supervisor on the project. Her cell number is (307)271-2538. She will be available 24 hours a day. In the case that Kasey is unavailable, please call me directly on my cell phone (number below).

Best Regards,

Nick Wilson, PE  
307-272-1126



- LEGEND:**
-  Road Closed Ahead  
Local Traffic Only
  -  ROAD CLOSED
  -  Detour Route

-  DETOUR AHEAD
-  ROAD CLOSED AHEAD
-  ROAD WORK AHEAD

-  DETOUR
-  DETOUR

-  DETOUR

-  ROAD WORK AHEAD
-  ROAD CLOSED AHEAD
-  DETOUR AHEAD