

RESOLUTION NO. 3377

A RESOLUTION OF THE RED LODGE CITY COUNCIL TO DEDICATE DOUBLE DITCH PARK AS AN OFFICIAL CITY PARK WITH CONTINUED USE AS A DOG PARK

WHEREAS, the Red Lodge City Council resolved on September 11, 2012 to approve the dedication of Double Ditch Dog Park as recommended by the Red Lodge Parks Board, and

WHEREAS, the conditions of approval and the recommendation by the Red Lodge Parks Board included development as an interim dog park to be reviewed after a period of time, and

WHEREAS, the Red Lodge Parks Board conducted a public meeting on July 16, 2014 to solicit comments from the public concerning whether to recommend making the Dog Park permanent, and

WHEREAS, 15 written comments have been received by the Parks Board unanimously supporting making the Dog Park permanent, along with supportive verbal comments at the Parks Board meetings of July 16, 2014 and September 17, 2014, and

WHEREAS, the City of Red Lodge Planning Staff has documented in writing that no agreement appears to exist that binds the City in developing Double Ditch Park in any particular manner, and

WHEREAS, the draft Comprehensive Parks Plan, 2014, for the City of Red Lodge recommends dedication of Double Ditch Park and continued use as a Dog Park, and


WHEREAS: the Red Lodge Parks Board has allocated money in their budget to survey the proposed Double Ditch Park, and:

WHEREAS, the Red Lodge Parks Board has determined that the original provisions for approval of a Dog Park have been met, that adequate user group assistance is available to assist Red Lodge Public Works as needed in maintenance of the Dog Park, and recommends that Double Ditch Park be dedicated as an official City park with continued use as a Dog Park,

NOW, THEREFORE, BE IT RESOLVED that Double Ditch Park be dedicated as an official City park with continued use as a Dog Park.

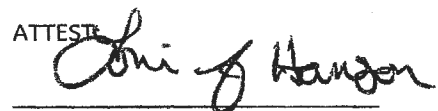
PASSED AND APPROVED BY A MAJORITY OF THE RED LODGE CITY COUNCIL ON THIS THE 14th DAY OF OCTOBER 2014.

City of Red Lodge



Ed Williams, Mayor

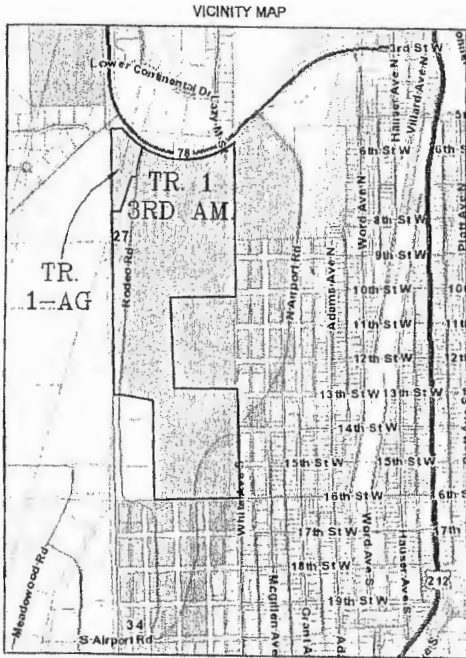
ATTEST



Loni Hanson, City Clerk

CERTIFICATE OF SURVEY NO. _____

SURVEY TO CREATE A TRACT OF LAND PURSUANT TO SECTION 76-3-207 (1)(c), MCA., LYING IN TRACT 1 AMENDED OF CERTIFICATE OF SURVEY 1811-2ND AMENDED (DOCUMENT 313041) WHICH IS LOCATED IN THE SW1/4NW1/4 AND W1/2SW1/4 OF SECTION 27, T.7S., R.20E., P.M.M., CARBON COUNTY, MONTANA



NOT TO SCALE



SCALE 1"=150'
0 150 300

SURVEYED BY: RED LODGE SURVEYING, INC.,
15 TWO WILLOW LANE, STE. B
RED LODGE, MT 59068

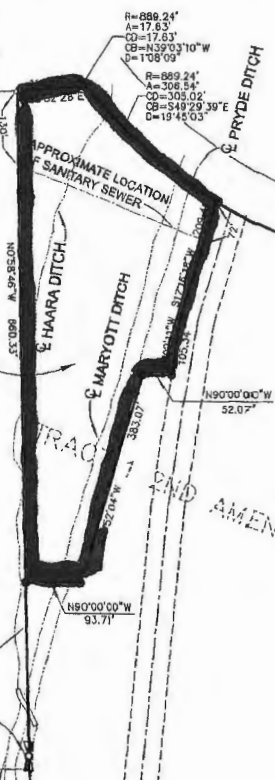
DURING: JANUARY OF 2016

LANDOWNER: CITY OF RED LODGE

TRACT 1-AG
4.36 ACRES

TRACT 11
C.O.S. 1820 AM.

QUARTER CORNER OF
SECTIONS 27 & 28
FOUND REBAR WITH CAP
VIA H.K.M.



US HIGHWAY 78

UNPLATTED

BASIS OF BEARING:
Consider the Basis of Bearing to be based on geodetic bearings of The City of Red Lodge Control provided by HKM Engineering. All other bearings contained herein relative thereto: Base No. 1000 bears S.52°30'54\"/>

PERIMETER BOUNDARY DESCRIPTION:
Tract 1 - 2nd Amended of Certificate of Survey No. 1811 - 2nd Amended (Document No. 313041). Located in the SW1/4NW1/4 and W1/2SW1/4 of Section 27, T.7S., R.20E., P.M.M., Carbon County, Montana. Containing 86.58 Acres more or less and all according to the attached Certificate of Survey. Subject to easements and/or rights-of-way of record, apparent on the ground, and/or reserved par this survey

LANDOWNER'S CERTIFICATION:

TRACT 1 3RD
AMENDED
82.20 ACRES

