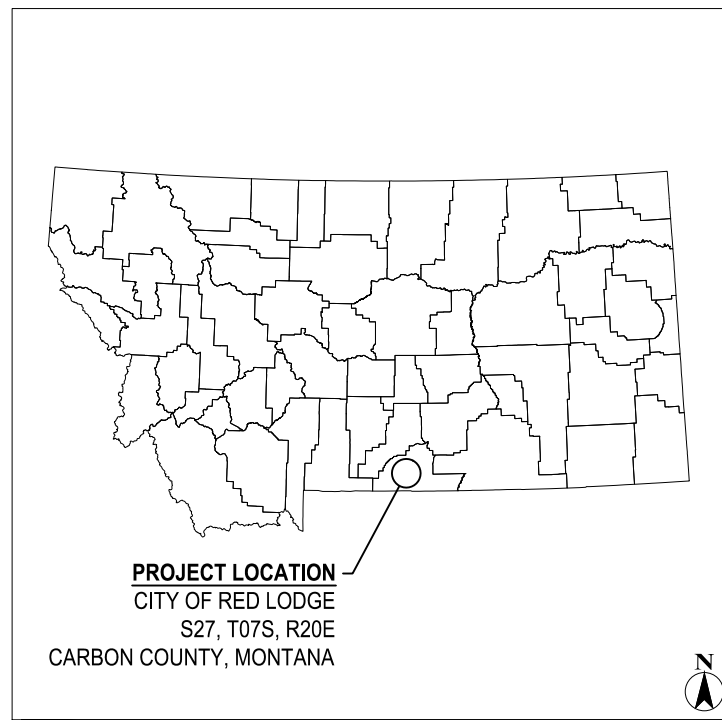


(30% CONSTRUCTION PLANS) FOR SWIMMING POOL REHABILITATION

PREPARED FOR
CITY OF RED LODGE, MONTANA

CARBON COUNTY, MONTANA



LOCATION MAP
NOT TO SCALE



SITE MAP
NOT TO SCALE

INDEX OF DRAWINGS		
SEQUENCE NUMBER	SHEET NUMBER	SHEET TITLE
1	G-1	COVER
2	C-1	DEMOLITION
3	C-2	POOL LAYOUT DIMENSIONS
4	C-3	POOL CROSS SECTIONS
5	A-1	EXISTING BATHHOUSE FLOOR PLAN
6	A-2	PROPOSED BATHHOUSE FLOOR PLAN
7	D-1	DETAILS
THIS PLAN CONTAINS 7 SHEETS		

QUALITY REVIEW :
_____, 2020

BY: _____
INTERSTATE ENGINEERING, INC.
PROJECT ENGINEER

APPROVED :
_____, 2020

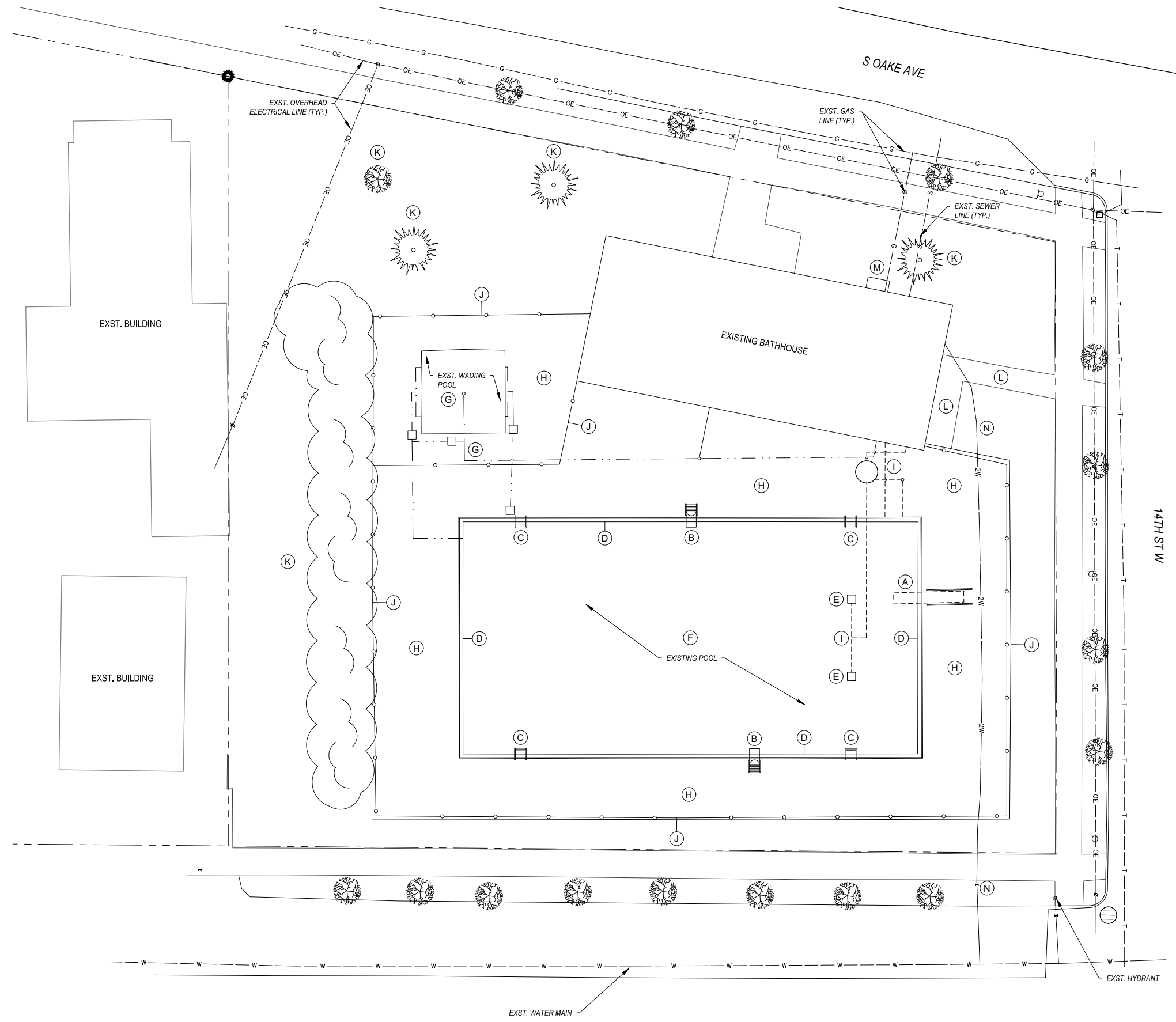
BY: _____
INTERSTATE ENGINEERING, INC.
PROJECT ENGINEER

REVISION NO.	DATE	BY	DESCRIPTION

 INTERSTATE ENGINEERING <small>Professionals you need, people you trust.</small>	Interstate Engineering, Inc. P.O. Box 20953 1211 Grand Avenue, Suite 6 Billings, MT 59104-0953 Ph (406) 256-1920 Fax (406) 256-9178 www.interstateeng.com <small>Other offices in Minnesota, North Dakota and South Dakota</small>	G-1 1 OF 7
--	--	----------------------



- CITY OFFICIALS
- MAYOR.....WILLIAM LARSON
 - PWD.....JIM BUSHNELL
 - CLERK/TREASURER.....LONI HANSON
 - COMMUNITY DEVELOPMENT DIRECTORJAMES CANIGLIA
 - COUNCIL PERSON.....MARY CAMERON
 - COUNCIL PERSON.....DAVE WESTWOOD
 - COUNCIL PERSON.....ROB WEAMER
 - COUNCIL PERSON.....THOMAS LYMAN
 - COUNCIL PERSON.....MICAHA HOFFMAN
 - COUNCIL PERSON.....GLORY MAHAN



NOTE:
 * EXISTING BURIED UTILITIES ARE COMPRISED OF THE BEST AVAILABLE AS BUILT DRAWINGS. THE EXACT LOCATION IS UNKNOWN. THE CONTRACTOR IS RESPONSIBLE FOR LOCATING AND EXPOSING ALL UTILITIES. UTILITIES SHOWN ON THESE DRAWINGS ARE LOCATED APPROXIMATELY. THE USE OF THE UTILITY LOCATION SHOWN HEREON FOR CONSTRUCTION PURPOSES IS PROHIBITED. THE EXACT LOCATION AND DEPTH OF ALL UTILITIES SHALL BE DETERMINED ONSITE BEFORE CONSTRUCTION COMMENCES. ANY PARTY FAILING TO LOCATE UTILITIES RELATIVE TO THE CONSTRUCTION AREA AGREES TO BE FULLY RESPONSIBLE.

** EXISTING FABRIC MAY BE USED BY CONTRACTOR FOR SECURITY FENCE. ANY ADDITIONAL SECURITY FENCE TO BE PROVIDED BY CONTRACTOR

DEMOLITION ITEMS

ITEM	DESCRIPTION
A	REMOVE DIVING STANDARDS & BASES
B	REMOVE LIFE GUARD CHAIR
C	REMOVE LADDER
D	REMOVE STAINLESS STEEL GUTTER SYSTEM
E	REMOVE MAIN DRAINS
F	REMOVE ALL POOL CONCRETE
G	REMOVE WADING POOL AND ALL PIPING*
H	REMOVE ALL CONCRETE DECK AND SUPPORTS
I	REMOVE POOL DRAIN AND ALL PIPING*
J	REMOVE CHAINLINK FENCE**
K	REMOVE SHRUB ROW & TREES
L	REMOVE SIDEWALK
M	RELOCATE GAS METER AND SERVICE
N	REMOVE CURB STOP AND 2" WATER SERVICE

Rev No	Date	By	Description

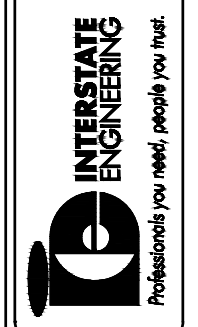
SWIMMING POOL REHABILITATION
 CITY OF RED LODGE, MONTANA
 CARBON COUNTY, MONTANA

DEMOLITION

Drawn By: KKB
 Surveyed By: RLS
 Checked By: BRM
 Designed By: BRM

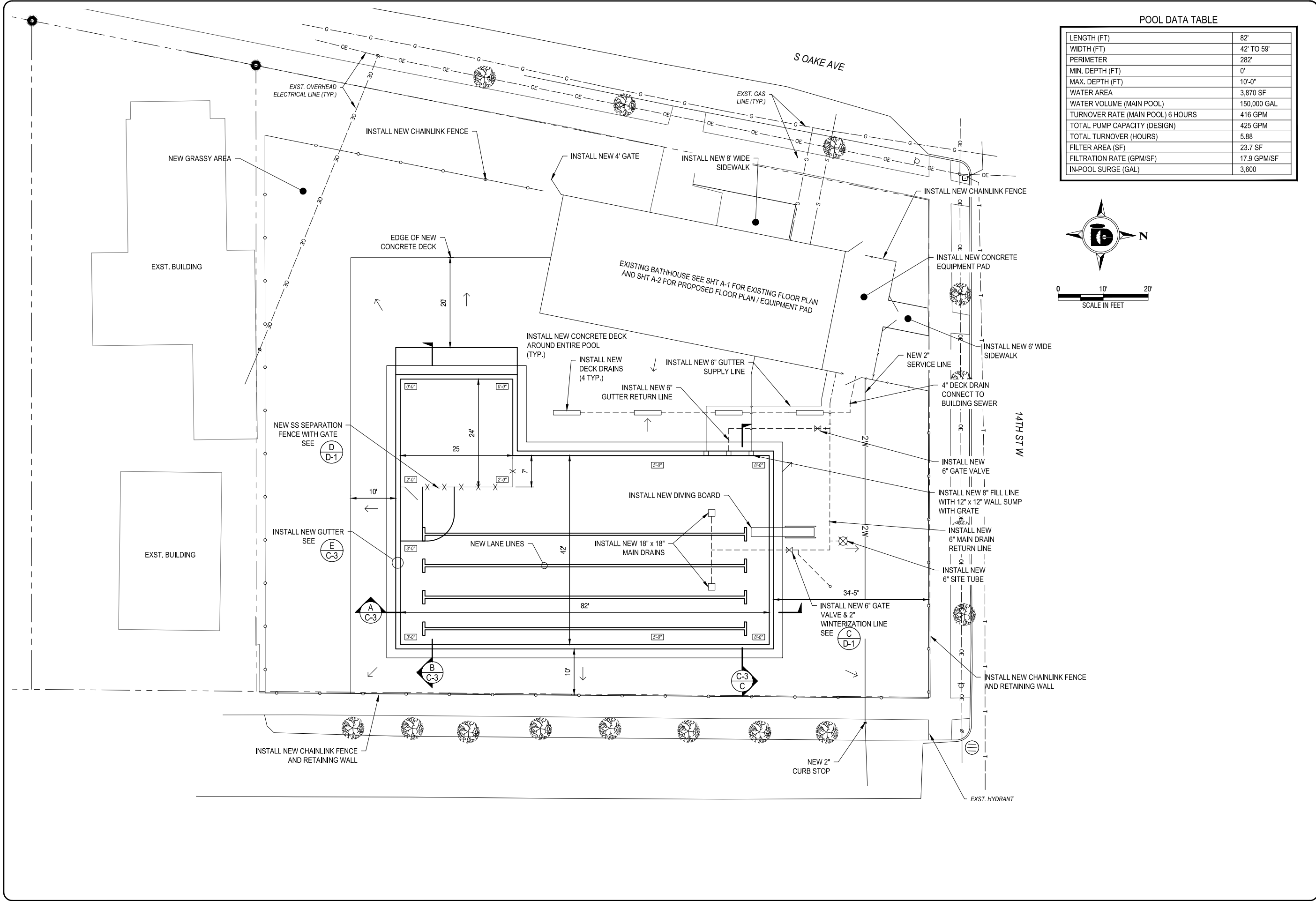
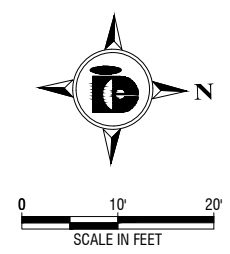
Project No: Y19-00-076
 Date: 01/2020

Interstate Engineering, Inc.
 P.O. Box 20953
 1211 Grand Avenue, Suite 6
 Billings, MT 59104-0953
 Ph (406) 256-1920
 Fax (406) 256-9178
 www.interstateeng.com
 Other offices in Minnesota, North Dakota and South Dakota



POOL DATA TABLE

LENGTH (FT)	82'
WIDTH (FT)	42' TO 59'
PERIMETER	282'
MIN. DEPTH (FT)	0'
MAX. DEPTH (FT)	10'-0"
WATER AREA	3,870 SF
WATER VOLUME (MAIN POOL)	150,000 GAL
TURNOVER RATE (MAIN POOL) 6 HOURS	416 GPM
TOTAL PUMP CAPACITY (DESIGN)	425 GPM
TOTAL TURNOVER (HOURS)	5.88
FILTER AREA (SF)	23.7 SF
FILTRATION RATE (GPM/SF)	17.9 GPM/SF
IN-POOL SURGE (GAL)	3,600



Rev No	Date	Description

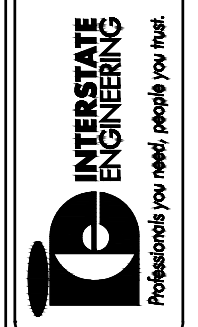
SWIMMING POOL REHABILITATION
 CITY OF RED LODGE, MONTANA
 CARBON COUNTY, MONTANA

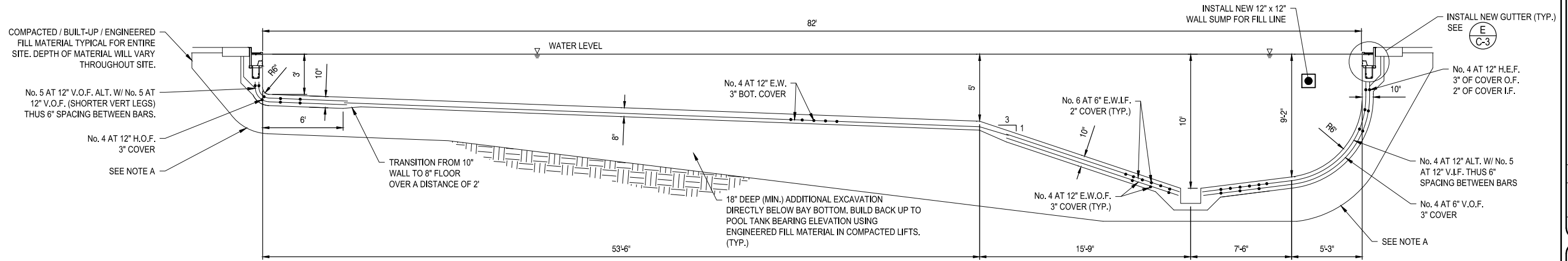
POOL LAYOUT DIMENSIONS

Project No: Y19-00-076
 Date: 01/20/20

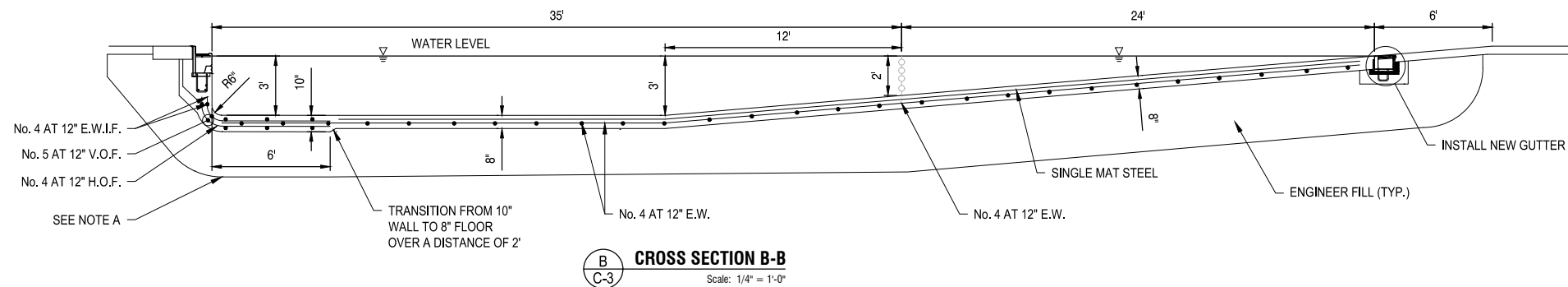
Surveyed By: RLS
 Drawn By: KKB
 Designed By: BRM

Interstate Engineering, Inc.
 P.O. Box 20953
 1211 Grand Avenue, Suite 6
 Billings, MT 59104-0953
 Ph (406) 256-1920
 Fax (406) 256-9178
 www.interstateeng.com
 Other offices in Minnesota, North Dakota and South Dakota

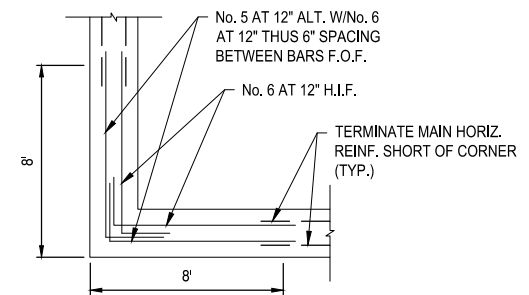




A
C-3
CROSS SECTION A-A
Scale: 1/4" = 1'-0"



B
C-3
CROSS SECTION B-B
Scale: 1/4" = 1'-0"



D
C-3
CORNER DETAIL
Scale: NTS

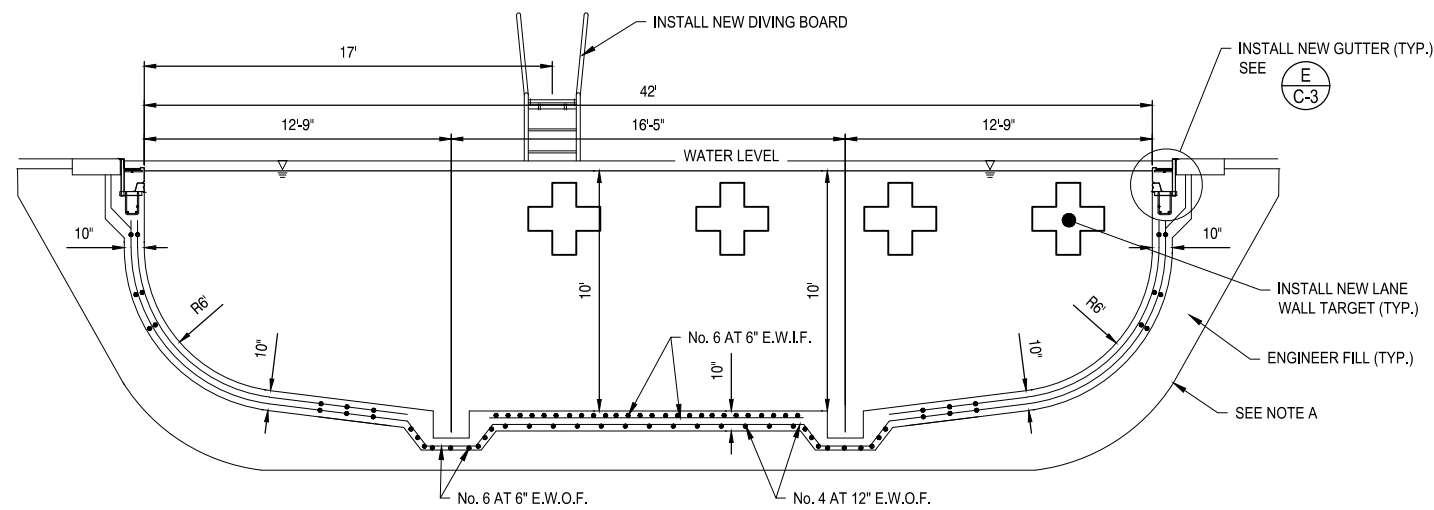
NOTES

- A. INSTALL NONWOVEN FILTER FABRIC ON EXISTING SUBGRADE AND PLACE 18" OF FREE DRAINING MATERIAL.
- B. NOT ALL HORIZONTAL REINF. SHOWN IN ORDER TO PRESERVE CLARITY.

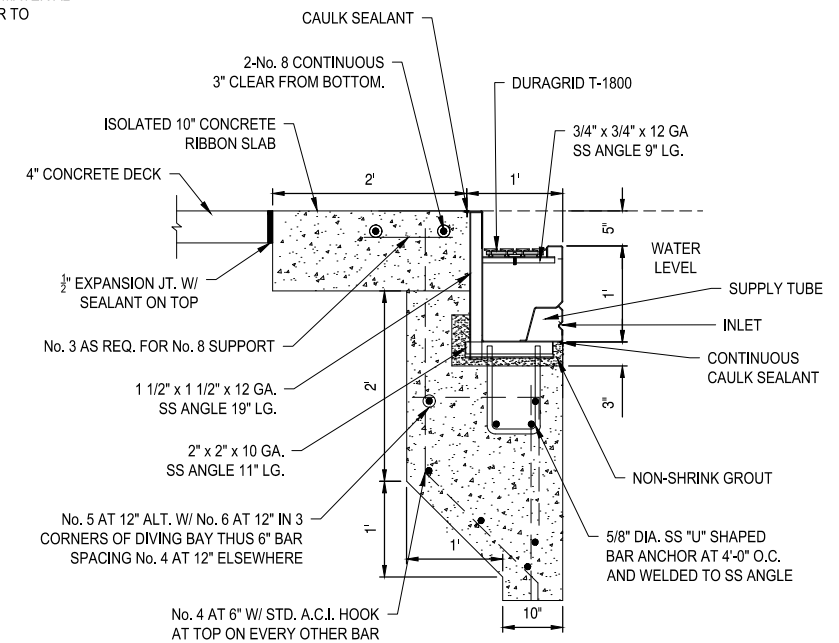
ABBREVIATIONS

E.W.I.F.	EACH WAY INSIDE FACE
E.W.O.F.	EACH WAY OUTSIDE FACE
H.E.F.	HORIZONTAL EACH FACE
V.E.F.	VERTICAL EACH FACE
V.I.F.	VERTICAL INSIDE FACE
V.O.F.	VERTICAL OUTSIDE FACE
H.O.F.	HORIZONTAL OUTSIDE FACE
H.I.F.	HORIZONTAL INSIDE FACE
E.W.	EACH WAY

CONCRETE COVER NOTES
3" ON CONCRETE DEPOSITED AGAINST EARTH (I.F.)
2" ON CONCRETE THAT HAS EXPOSED FACE (O.F.)



C
C-3
CROSS SECTION C-C
Scale: 1/4" = 1'-0"

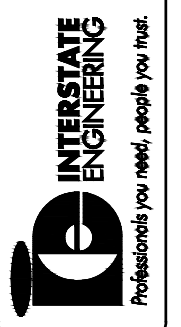


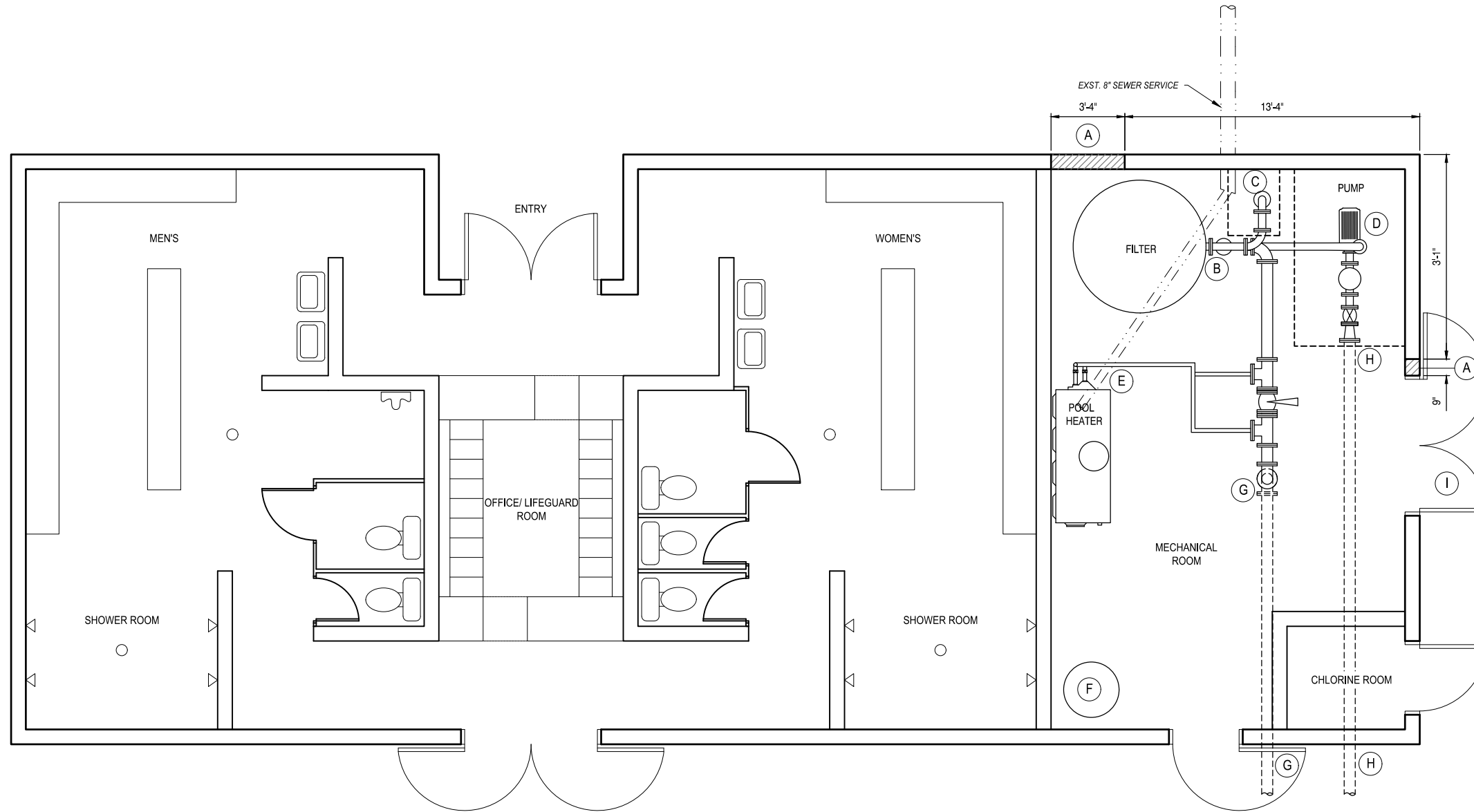
E
C-3
S.S. GUTTER DETAIL
Scale: NTS

Rev No	Date	By	Description

SWIMMING POOL REHABILITATION CITY OF RED LODGE, MONTANA CARBON COUNTY, MONTANA		Project No: Y19-00-076
POOL CROSS SECTIONS		Date: 01/20/20
Drawn By: KKB	Surveyed By: RLS	Project No: Y19-00-076
Checked By: BRM	Designed By: BRM	Date: 01/20/20

Interstate Engineering, Inc.
P.O. Box 20953
1211 Grand Avenue, Suite 6
Billings, MT 59104-0953
Ph (406) 256-1920
Fax (406) 256-9178
www.interstateeng.com
Other offices in Minnesota, North Dakota and South Dakota





EXISTING BATHHOUSE FLOOR PLAN - DEMOLITION

LEGEND	
	EXISTING EXTERIOR WALL - TO BE REMOVED

ITEM	DESCRIPTION	TO BE REMOVE BY
A	EXTERIOR WALL FOR DOOR	CONTRACTOR
B	28.3 SQFT FILTER AND ASSOCIATED PIPING	CONTRACTOR
C	FILL IN 7 SQ FT SUMP PIT	CONTRACTOR
D	7.5 HP PUMP AND ASSOCIATED PIPING	CONTRACTOR
E	1.2 MILL. BTU HEATER AND ASSOCIATED PIPING	CONTRACTOR
F	DOMESTIC HOT WATER HEATER	CONTRACTOR
G	PLUG EXISTING RETURN LINE AT FLOOR LEVEL AND OUTSIDE THE BUILDING	CONTRACTOR
H	PLUG EXISTING SUCTION LINE AT THE PUMP PIT AND OUTSIDE THE BUILDING	CONTRACTOR
I	DOUBLE DOOR	CONTRACTOR

Rev No	Date	By	Description

SWIMMING POOL REHABILITATION
 CITY OF RED LODGE, MONTANA
 CARBON COUNTY, MONTANA

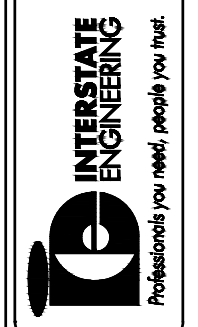
EXISTING BATHHOUSE FLOOR PLAN

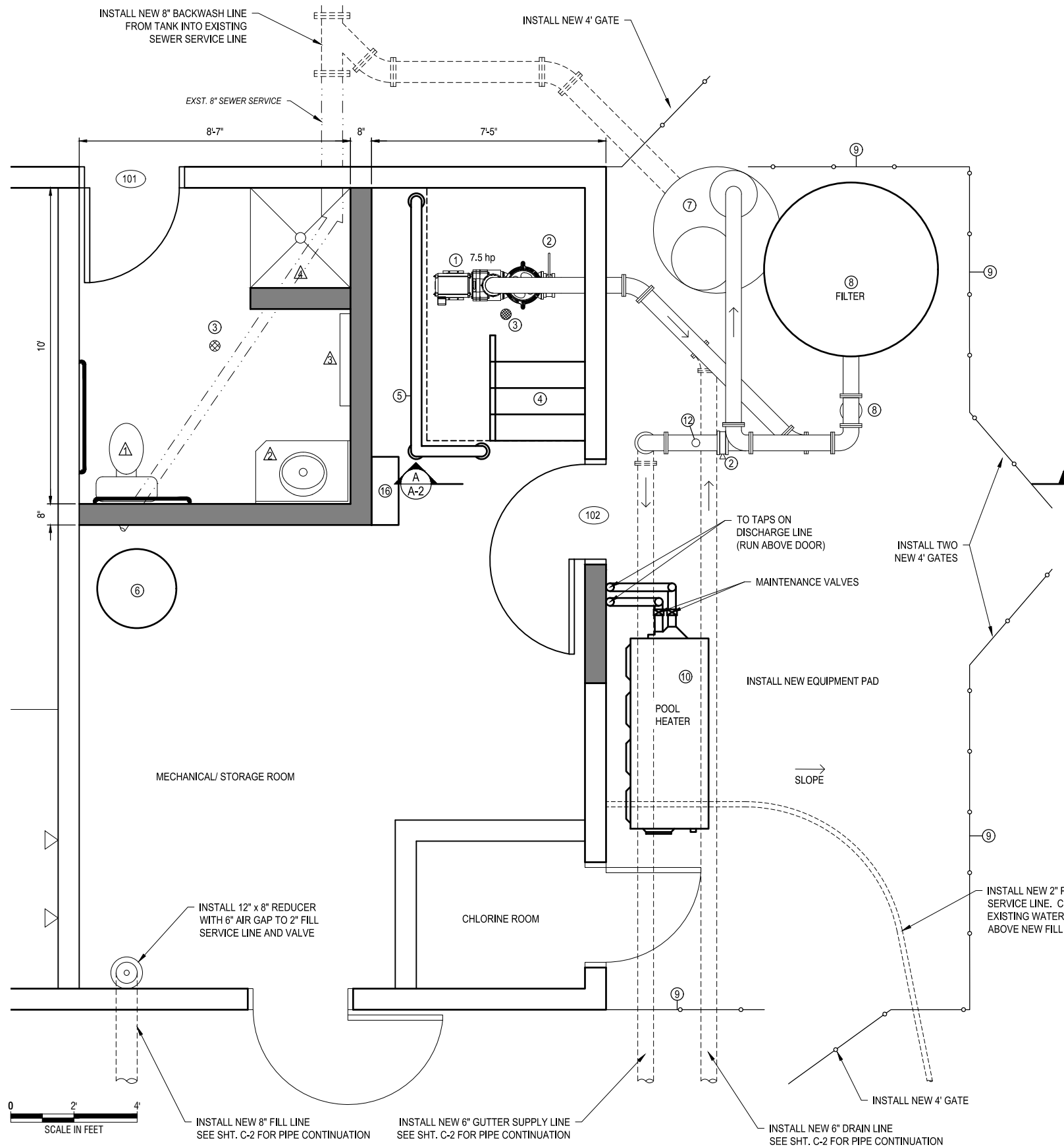
Drawn By: KKB
 Checked By: BRM

Surveyed By: RLS
 Designed By: BRM

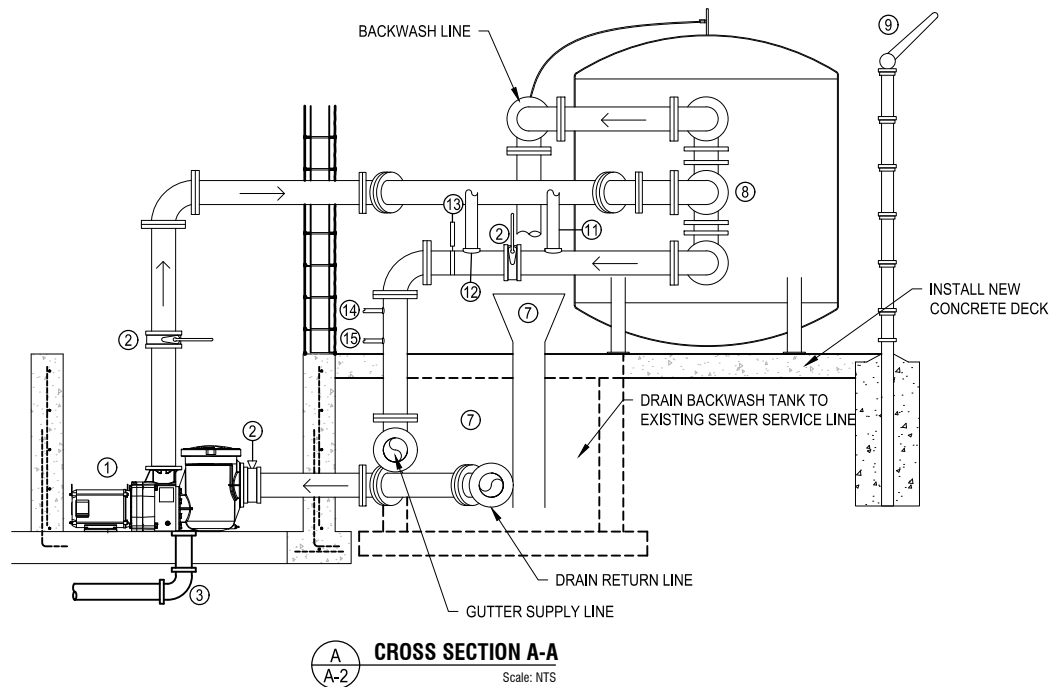
Project No: Y19-00-076
 Date: 01/2020

Interstate Engineering, Inc.
 P.O. Box 20953
 1211 Grand Avenue, Suite 6
 Billings, MT 59104-0953
 Ph (406) 256-1920
 Fax (406) 256-9178
 www.interstateeng.com
 Other offices in Minnesota, North Dakota and South Dakota





BATHHOUSE FLOOR PLAN - NEW LAYOUT



ITEM	DESCRIPTION	COMMENTS
1	PUMP WITH INTEGRAL STRAINER	7.5 HP, 3 PHASE, 230/460
2	6" BUTTERFLY VALVE	
3	FLOOR DRAIN	CONNECT TO EXISTING SEWER DRAIN LINE
4	METAL STAIRS	
5	STAINLESS STEEL GUARD RAIL	
6	DOMESTIC HOT WATER HEATER	CONNECT TO EXISTING INFRASTRUCTURE
7	48" Ø BACKWASH MANHOLE	INCLUDES 18" Ø STANDPIPE WITH 6" AIR GAP
8	66" HIGH RATE SAND FILTER	SINGLE LEVER LINKAGE
9	SECURITY FENCE WITH PRIVACY SLATS	
10	POOL HEATER**	
11	TO HEATER**	INCLUDE NEW VALVE, ROUTE LINE TO WALL AND OVER DOOR
12	FROM HEATER	INCLUDE NEW VALVE, ROUTE LINE TO WALL AND OVER DOOR
13	RATE OF FLOW INDICATOR	
14	PH INJECTION POINT	
15	CHLORINE INJECTION POINT	
16	MOTOR STARTER ON/OFF	

NOTE:
 ** POOL HEATER LINES ARE TO BE VALVED TO BE SOLAR READY FOR THE FUTURE.

LEGEND	
	NEW WALL
	TOILET
	SINK COUNTER
	BABY CHANGING STATION
	SHOWER
	DOOR SCHEDULE NUMBER

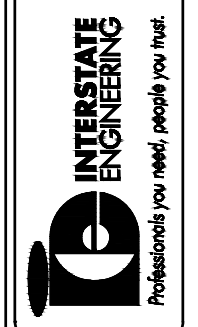
Rev No	Date	Description

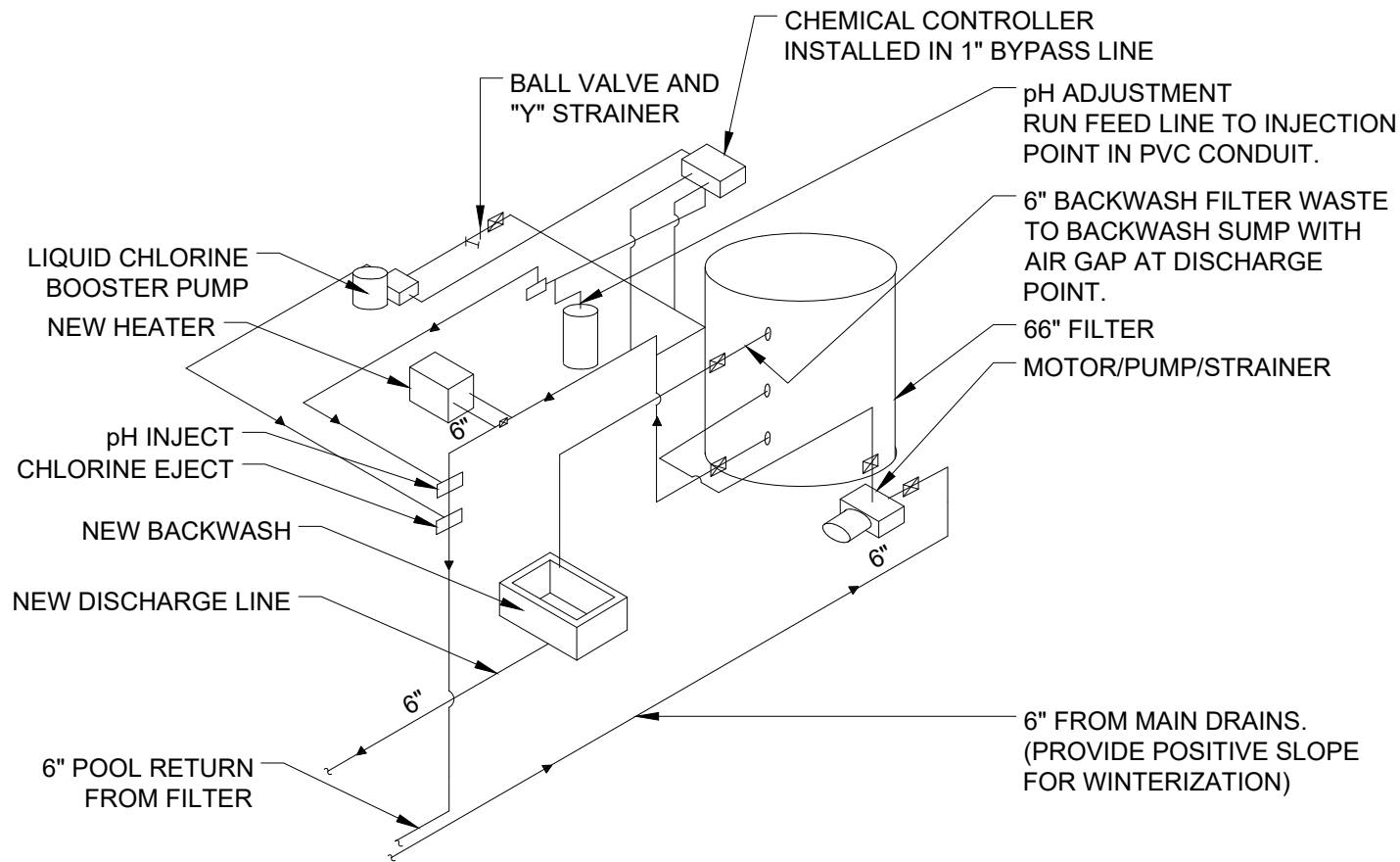
SWIMMING POOL REHABILITATION
 CITY OF RED LODGE, MONTANA
 CARBON COUNTY, MONTANA

PROPOSED BATHHOUSE FLOOR PLAN

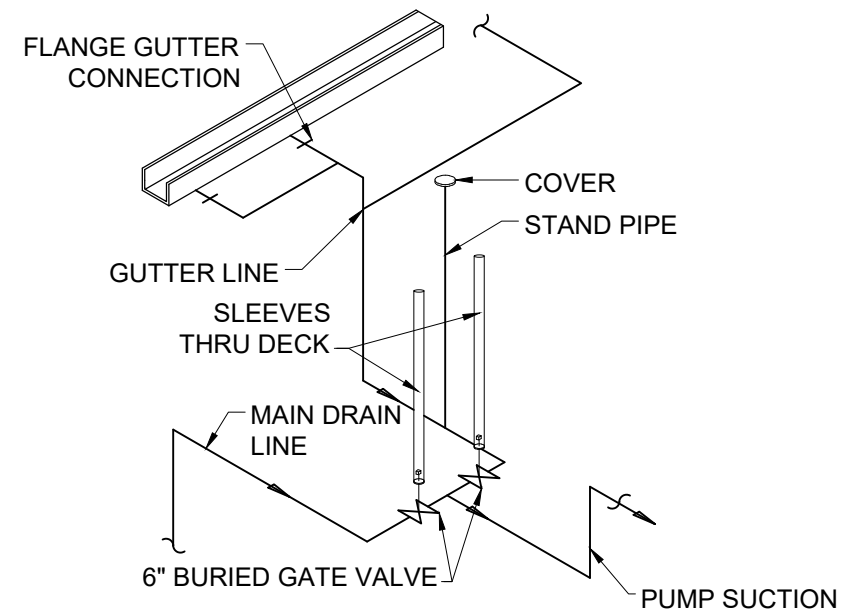
Drawn By: KKB
 Surveyed By: RLS
 Project No: Y19-00-076
 Checked By: BRM
 Designed By: BRM
 Date: 01/20/20

Interstate Engineering, Inc.
 P.O. Box 20953
 1211 Grand Avenue, Suite 6
 Billings, MT 59104-0953
 Ph (406) 256-1920
 Fax (406) 256-9178
 www.interstateeng.com
 Other offices in Minnesota, North Dakota and South Dakota

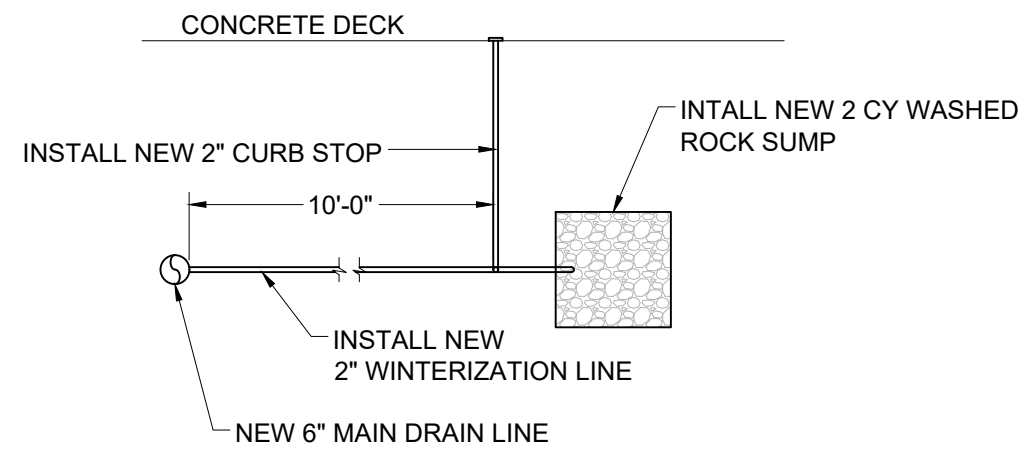




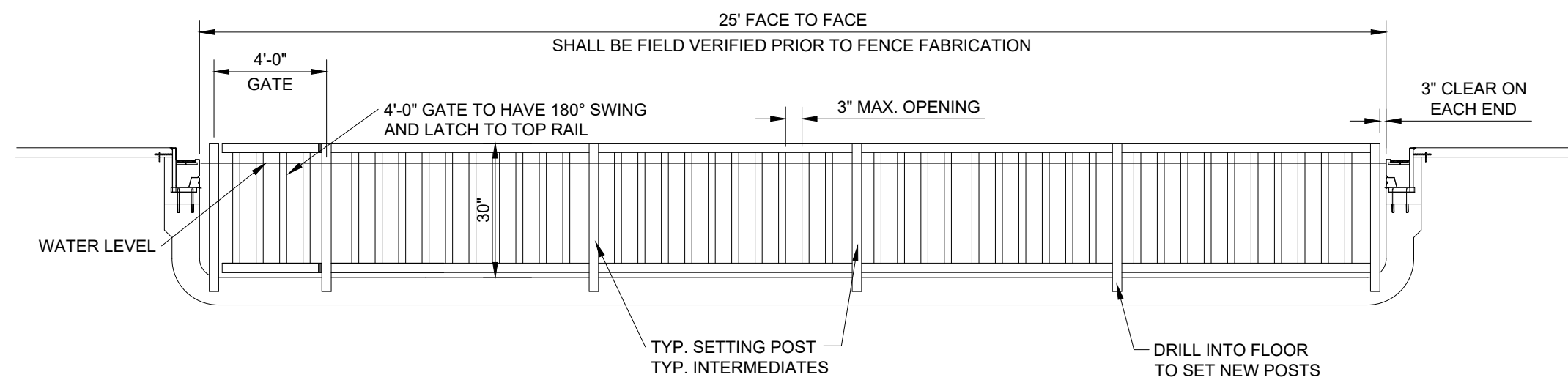
A
D-1 **FILTRATION SCHEMATIC - MAIN POOL**
Scale: NTS



B
D-1 **BALANCE LINE SCHEMATIC**
Scale: NTS



C
D-1 **WINTERIZATION DETAIL**
Scale: NTS



D
D-1 **STAINLESS STEEL SEPARATION FENCE DETAIL**
Scale: NTS

Rev No	Date	By	Description

DETAILS			
Swamby By:	RLS	Project No:	Y19-00-076
Drawn By:	BRM	Designed By:	BRM
Checked By:		Date:	01/20/20

Interstate Engineering, Inc.
P.O. Box 20953
1211 Grand Avenue, Suite 6
Billings, MT 59104-0953
Ph (406) 256-1920
Fax (406) 256-9178
www.interstateeng.com
Other offices in Minnesota, North Dakota and South Dakota

